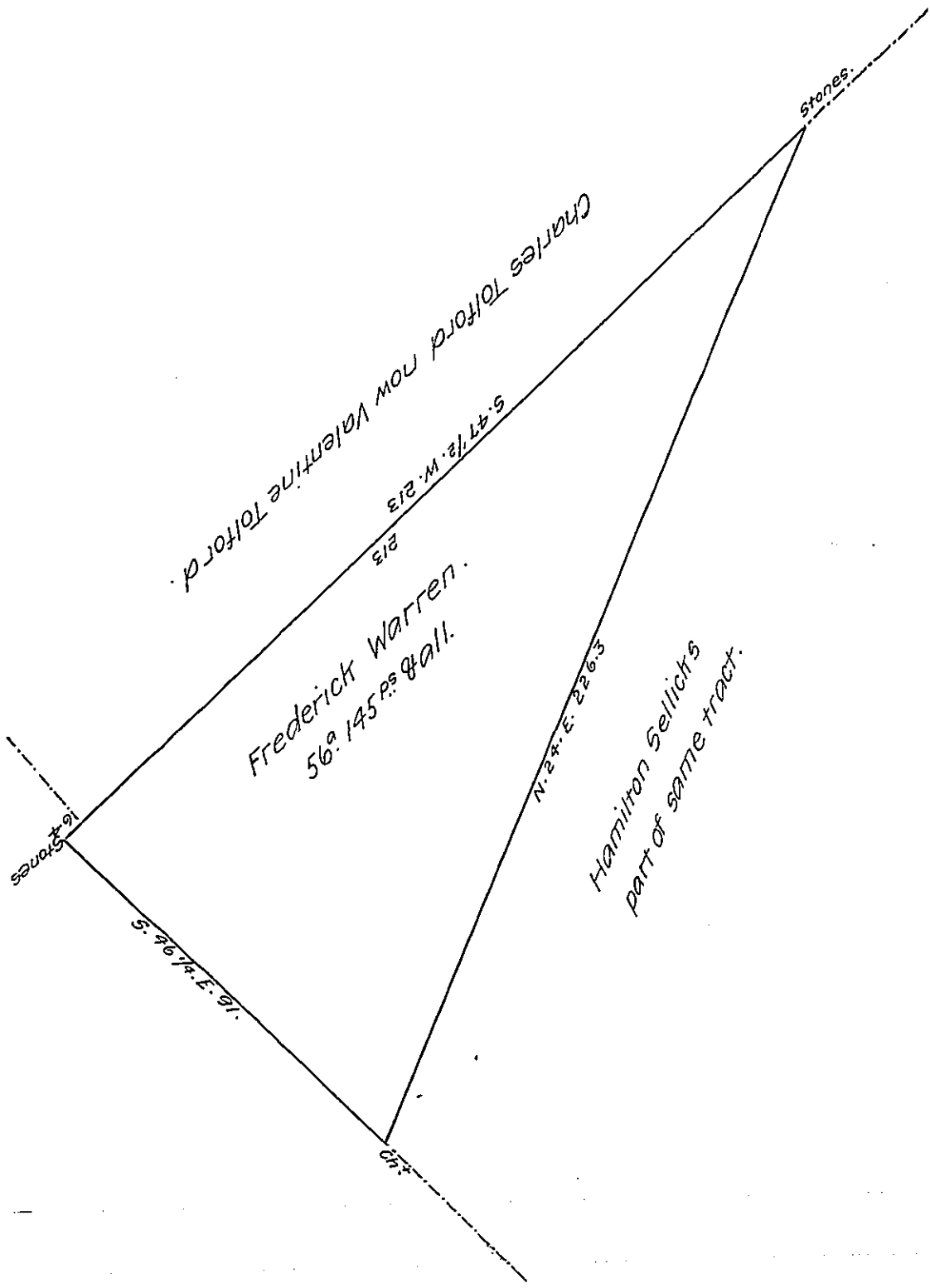


FORM NO. 1.



Situated in the South mountain Manallen Township Adams County Being
 part of a larger tract of 431^o 37^p & all. Surveyed August 28th 1794 ^{by warrant} Dated
 May 7th 1794. Surveyed & divided from the residue July 27th 1809.

By Saml Sloan. D.S.

To Andrew Porter Esq.
 Surveyor General.

IN TESTIMONY that the above is a copy of the original remaining on file in
 the Department of Internal Affairs of Pennsylvania, made
 conformably to an Act of Assembly approved the 16th day of
 February 1833, I have hereunto set my hand and caused
 the Seal of said Department to be affixed at Harrisburg,
 this sixteenth day of April 1907.

Isaac B. Brown
 Secretary of Internal Affairs.